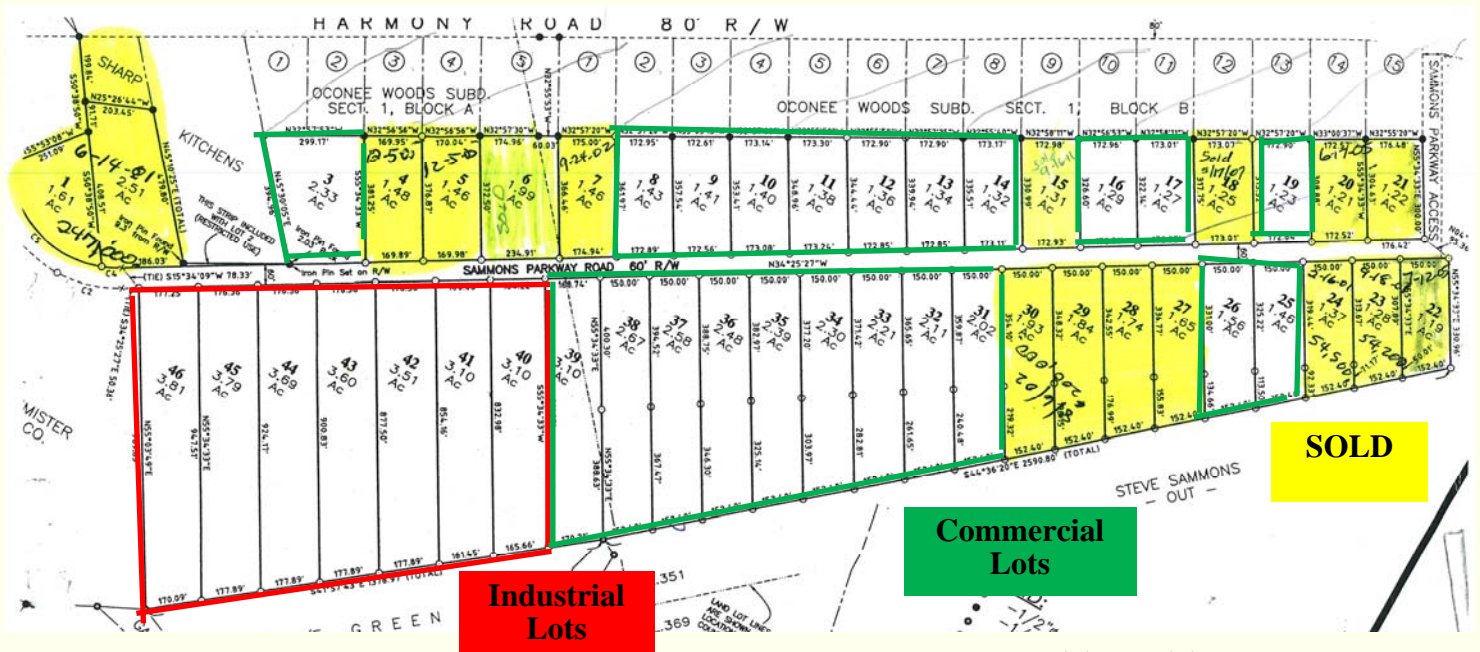


Sammons Industrial Park

Sammons Industrial Parkway



SITE DETAILS

Conveniently located only 11 miles from Interstate 20.

The 110 Acre Sammons Industrial Park is owned by the Farmers and Merchants Bank. Located in the Harmony Crossing area, the location is less than one mile from Georgia Highway 44. Of the 65.26 available acres, 40.66 acres are zoned C-2 Commercial and 24.6 acres are zoned I-M Heavy Industrial.

UTILITIES

The City of Eatonton is the primary supplier for all water, sewer and gas mains within the city.

- WATER MAIN: Piedmont Water, 10" main
- SEWER MAIN: Piedmont Water, 8" main
- GAS MAIN: City of Eatonton, 4" main
- ELECTRICITY SUPPLIER: Tri-County EMC 3 Phase

ADDRESS: **SAMMONS PARKWAY, EATONTON, PUTNAM COUNTY, GEORGIA 31024**

NEAREST INTERSTATE: **I-20**

DISTANCE TO INTERSTATE: **11 MILES**

NEAREST GEORGIA PORT: **PORT OF SAVANNAH GARDEN CITY TERMINAL**

DISTANCE TO GEORGIA PORT: **195 MILES**

NEAREST INTERNATIONAL AIRPORT: **HARTSFIELD-JACKSON ATLANTA INTERNATIONAL**

DISTANCE TO INTERNATIONAL AIRPORT: **84 MILES**

JOB TAX CREDITS: **\$1750/JOB**

INVESTMENT TAX CREDITS: **1%**

CONTACT

PUTNAM DEVELOPMENT AUTHORITY
117 Putnam Drive, Eatonton, GA 31024

www.PutnamDevelopmentAuthority.com

Terry Schwindler, Economic Development Director
terry@putnamcountyga.us
(706) 816-8099

Site Location Map

Sammons Industrial Parkway



Industrial Sites	Acreage	Road Frontage (ft)
Lot 40-46	24.6	1204

Commercial Sites	Acreage	Road Frontage (ft)
Lot 3	2.33	Approx. 200
Lot 8-14	9.66	1210
Lot 16-17	2.56	345
Lot 19	1.23	172
Lot 25-26	3.02	300
Lot 31-39	21.89	1368

SAMMONS INDUSTRIAL PARKWAY, EATONTON, PUTNAM COUNTY, GA 31024
33.428829, -83.269528

www.PutnamDevelopmentAuthority.com

