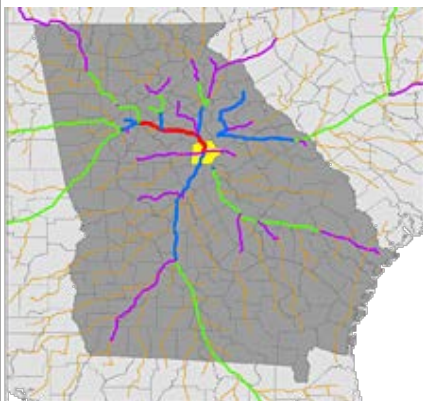


PUTNAM COUNTY LOGISTICS SPOTLIGHT

PUTNAM COUNTY ROAD FREIGHT

(DATA SOURCE: IHS GLOBAL INSIGHT, CENTER ANALYSIS)



IN-BOUND TRUCK FREIGHT:

TRUCK FREIGHT TONS: **212,196**
TRUCK FREIGHT VALUE: **\$903,664,084**
TRUCK FREIGHT MOVES: **13,542**

Inbound Freight:

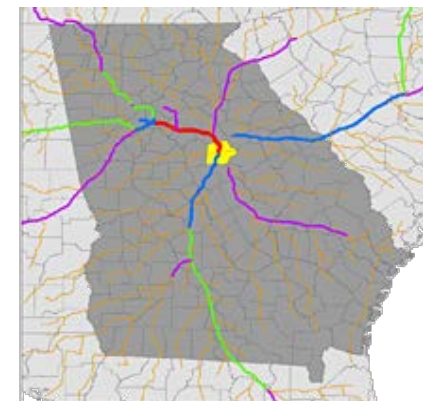
Those goods that originated outside the State of Georgia and had a destination inside Putnam County.

OUT-BOUND TRUCK FREIGHT:

TRUCK FREIGHT TONS: **230,451**
TRUCK FREIGHT VALUE: **\$495,750,422**
TRUCK FREIGHT MOVES: **18,473**

Outbound Freight:

Those goods that originated inside Putnam County and had a destination outside the State of Georgia.



INTRA-GEORGIA TRUCK FREIGHT:

TRUCK FREIGHT TONS: **370,422**
TRUCK FREIGHT VALUE: **\$237,273,816**
TRUCK FREIGHT MOVES: **52,391**

Intra-Georgia Freight:

Those goods with both an origin and destination inside the State of Georgia, one of which was Putnam County.

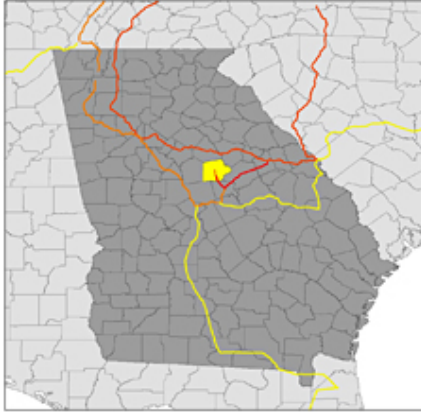
GEORGIA ROAD FREIGHT HIGHLIGHTS:

- Cargo is **within two or fewer days by truck from 80% of the U.S.** industrial and commercial markets.
- **100% of the Top 50 Trucking Companies** utilize Georgia's 1,244 miles of interstate highways
- **Ranked 9th nationally** with **450,000** commercially licensed Georgia truck drivers
- Georgia issues **51% of all the CDL certificates in the southeast**, and **1 out of every 8** nationally.
- **5.9 million** tons of freight is transported on Georgia roads every week.
- Metro Atlanta is **ranked 6th in ground freight movement** in the Nation
- Georgia maintains **1,200 miles of interstate** highways and **20,000 miles** of federal and state highways.
- Over **40% of North American manufacturing** locations are within a 500 mile radius of Atlanta



TRUCK TRANSIT TIMES



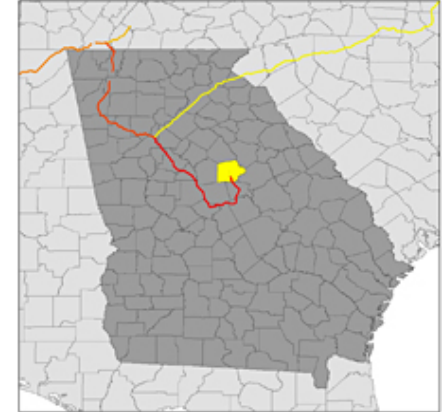


IN-BOUND RAIL FREIGHT:

RAIL FREIGHT TONS: **4,432,003**
 RAIL FREIGHT VALUE: **\$171,136,110**
 RAIL FREIGHT MOVES: **39,845**

OUT-BOUND RAIL FREIGHT:

RAIL FREIGHT TONS: **82,574**
 RAIL FREIGHT VALUE: **\$5,853,534**
 RAIL FREIGHT MOVES: **954**



Putnam County was also connected to **3,619 tons** of freight moved by rail **INTRA-GEORGIA**. (where origin and destination were *both* inside the state). This tonnage was moved by **36 rail cars** and had a value of **\$2,002,463**.

PUTNAM COUNTY RAIL ASSETS:

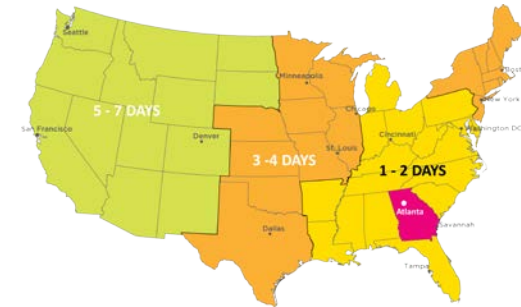
Served by CSX: **yes** Served by NS: **yes**
 Short line Rail Services Include: **NONE**
 Terminals/yards in county: **NONE**
 NOTE: **NS** in county; **CSX** accessible via **NS** line in Baldwin County

GEORGIA RAIL FREIGHT HIGHLIGHTS:

- Georgia is **home to 26 freight railroads** (2 class-1's, and 24 short-line railroads)
- Home to the **largest intermodal facility** on the east coast.
- Georgia's is the origin of **39 million tons** of rail freight every year.
- Georgia **has the largest railroad network in the Southeast**, and ranked:
 - **7th highest** in the Nation for total rail miles (*4,680 miles of track*)
 - **5th most** rail tons terminating in State
 - **13th** for number of railroads in U.S.
- Nationwide, **each freight rail job supports 4.5 jobs** elsewhere in the economy.
- Each **\$1 billion** in new rail investment **creates over 17,000 jobs**.



[CLICK IMAGE FOR FOR FULL-SIZE .PDF]



RAIL TRANSIT TIMES FROM GEORGIA

PUTNAM COUNTY OCEAN FREIGHT

Import Volume:	10 TEU's
Import Tons:	99 Tons
Export Volume:	0 TEU's
Export Tons:	0 Tons

Represents FY13 totals of **PUTNAM COUNTY** cargo thru Georgia's Ports ONLY
 (Data Source: GPA, PIERS)

LEARN MORE:
GAPORTS.COM/MOREIMPACT

GEORGIA OCEAN FREIGHT HIGHLIGHTS:

- The Port of Savannah is the **largest single container terminal in North America**
- Georgia's deep-water ports and inland barge terminals **support more than 352,000 jobs** throughout the state
- The Port of Savannah is the **Nation's fastest-growing top container port**, is the **4th** busiest in the USA and **2nd** busiest on the East Coast.
- The Port of **Brunswick is #1 for new import vehicles in the US**, the **2nd** busiest port in the US for total ro/ro volume, and is the **2nd largest grain facility** on the East Coast.
- In 2013, the Port of Savannah was the **2nd busiest U.S. container port for exports** of American goods. (behind only the Port of LA)
- The Port handles nearly **40% of the Nation's containerized poultry exports** and is **#1 for refrigerated exports** on the East & Gulf Coasts.
- The Port of Savannah **moved 3.14 million TEU's; 29 million tons; and 700,000 auto & machinery units** in FY2014.
- Savannah hosts **the most global shipping services among US Southeast Coast and Gulf ports**, for a total of **37** weekly services.

PUTNAM COUNTY WAREHOUSING & DISTRIBUTION

GEORGIA W&D HIGHLIGHTS:

- 47 of the Top 50 most successful 3PL's (94%) are either headquartered or have significant operations in Georgia.
- 2 of the 10 largest 3PL's in North America are hq'd in GA (#2 & #7)
- There are 230 retail distribution centers in Georgia with over 175 retailers; 28 of which have more than 1 million sq.ft. each.
- Georgia is home to 245 million sq.ft. of W&D space in over 953 facilities statewide. 14 million sq.ft. of which is within 2.5 hours of the Port of Savannah.
- Cold storage capability totals 14 million sq.ft. in nearly 80 facilities statewide
- 23 of the top 85 3PL's in food logistics have operations in Georgia
- Georgia is home to 28 DEA Certified pharmaceutical distribution facilities
- 2 of the 5 largest private warehouse operators in North America are headquartered in GA (#1 & #5)
- Georgia is home to 6 of the top 50 cargo carriers, including the world's number one carrier UPS.
- Of the top 25 global 3PL's, 90% have operations in Georgia.

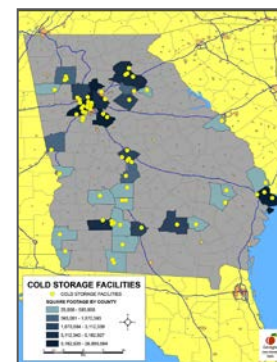
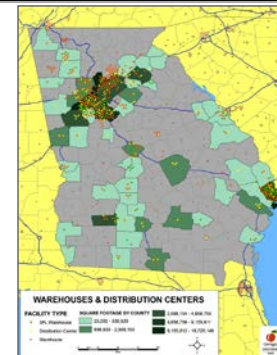
Putnam is home to a total of **1** warehousing and distribution facilities.

With a total capacity of **340,000 sq/ft**,
These companies employ
25 people in Putnam County alone.

THE LARGEST OF THESE FACILITIES INCLUDE:

#1) Haband Co Inc / 340,000 Sq.ft.

Also, for a listing of currently available buildings
in Putnam County: [CLICK HERE](#)



GEORGIA AIR CARGO

Georgia has 105 public use airports, 10 of which have notable air cargo operations. Statewide, the aviation industry (which includes air cargo) contributes: **\$62.6B state/federal economy;** **471,000 employees;** **\$17.8 billion payroll.**

Measured by cargo tonnage, the two largest in Georgia are located in Atlanta and Albany...

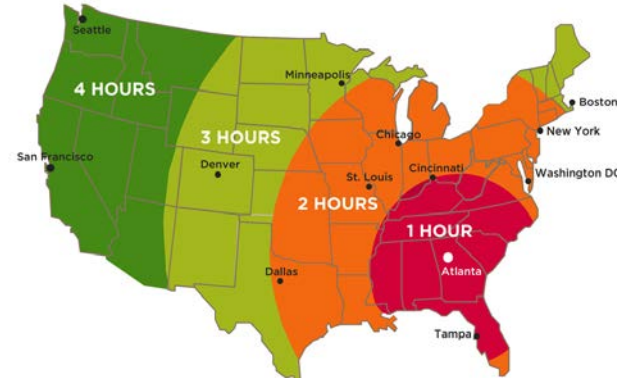
Atlanta Hartsfield-Jackson International Airport:

- ATL handles 98% of the State's annual air freight volume
- World's busiest passenger airport, with 2,500 arrivals and departures and 250,000 passengers per day
- Has a direct impact of more than \$32.5 billion for metro Atlanta
- Over 80% of U.S. consumers are within 2 hour flight time from Atlanta
- 10th largest in the U.S. for cargo, and 31st in the world
- ATL is the only air cargo perishables complex of its size in the Southeast
- 2 million sq.ft. of on-terminal cargo handling/warehousing capacity.
- Foreign Trade Zone #26 is directly connected to the airport, and is a U.S. Fish and Wildlife port of entry

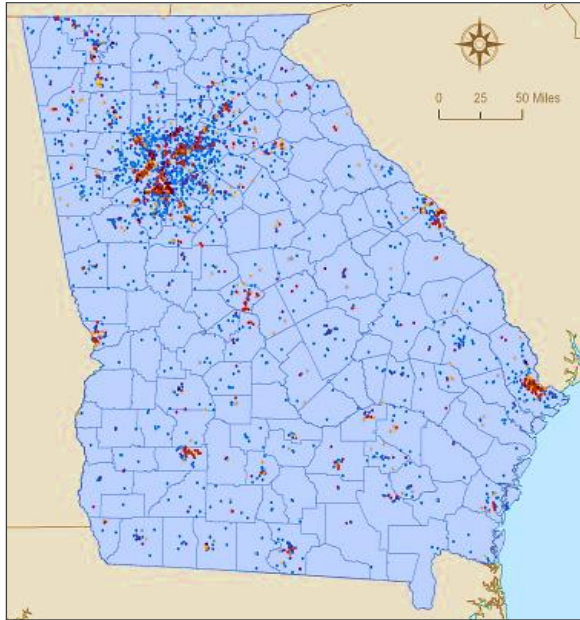
Southwest Georgia Regional Airport (Albany):

- Primarily used by UPS to move their freight to the main UPS world hub in Louisville, Kentucky.
- In 2011, UPS moved 9.7 million pounds of cargo into and 5.7 million pounds of cargo out of Southwest Georgia Regional Airport.
- In 2012 the Southwest Georgia Regional Airport contributed: \$54.5 million in local economic impact, 548 jobs and \$17.1 million in payroll.

AIR TRANSIT TIMES



PUTNAM COUNTY LOGISTICS INDUSTRY PROFILE



[CLICK IMAGE FOR FOR FULL-SIZE .PDF]

The logistics industry is a dynamic “ecosystem” whose core is essentially made up of companies that **provide** logistics services (*i.e. trucking, rail, software, etc.*) and those that **consume** them (*i.e. manufacturers, wholesalers, distribution centers, etc.*)

Putnam County is home to:

5 logistics providers who employ a total of **19** in the County and generate **\$3,232,000** in annual sales.

67 logistics-enabled companies who employ an additional **2,022** Georgians and generate **\$555,537,000** in annual sales.

To learn more about the many services these providers offer and connect with them quickly... visit the free: **Logistics Provider Directory** located on: **WWW.GEORGIALOGISTICS.COM**

GEORGIA ECOSYSTEM HIGHLIGHTS:

- Georgia is home to **12,300 providers** of logistics services
- Providers of logistics services **employ over 152,000** and together generated **\$20.1 Billion in sales** in 2013.
- **In 2013 GA ranked #1** for: Most Competitive State; Best State for Business; Infrastructure; Workforce (Site Selection Magazine & CNBC)
- Georgia **ranks 5th in the Nation** for logistics and supply chain employment
- More than **24 logistics related associations** have chapters in Georgia
- **17 Fortune 500 companies** are headquartered in Georgia
- **70% of the top 20** supply chain management software providers have operations in Georgia. **25% are headquartered here** including: Manhattan Associates, Infor, Logility, Aldata Solutions, and CDC Software.
- There are **400 innovative technology companies** that provide solutions to the logistics industry in the State.

LOGISTICS EDUCATION IN PUTNAM COUNTY



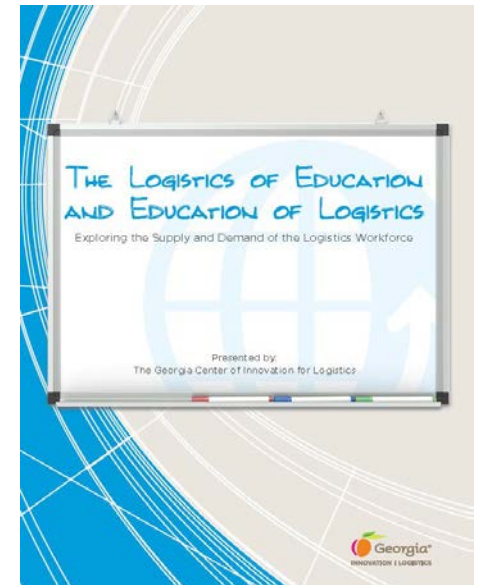
PUTNAM LOGISTICS EDUCATION OFFERINGS:

The rapid growth of the **logistics-enabled industry** has created a strong demand for a **well trained workforce** to meet the needs. Georgia’s schools offer in total **100 different logistics related education offerings** throughout the State. ([Link to full report on right.](#))

These offerings range widely from certificate to PhD programs, as well as the topics included in the programs.

Some of the logistics educational offerings nearest to Putnam County include:

- Georgia College and State University
- Central Georgia Technical College
- Wesleyan College
- Mercer University



[CLICK IMAGE FOR FOR FULL-SIZE .PDF]



[CLICK IMAGE FOR FOR FULL-SIZE .PDF]

PUTNAM
COUNTY

To read more about Putnam County on the *New Georgia Encyclopedia*: [CLICK HERE](#)

To download a comprehensive labor profile of Putnam County: [CLICK HERE](#)

Putnam County is located in Georgia's **Service Delivery Region #6** (SEE MAP BELOW). There are a wide range of professionals waiting to help companies of all types and sizes. These include the **local leadership of Putnam County** and the team at the **State level**, just to name a few. Below are a few key points of contact to get you started exploring Putnam County:

Terry Schwindler, Economic Development Director, Putnam Development Authority

Email: terry@putnamcountyga.us, Call: 706-485-1884 or: [VISIT HERE](#)

GEORGIA DEPARTMENT OF ECONOMIC DEVELOPMENT CONTACTS:

- Center of Innovation for Logistics: Emily Schrenk - Industry Coordinator - eschrenk@georgia.org
- Region #6 Project Manager: [Jennifer Nelson](mailto:jnelson@georgia.org) - 478.752.1893 - jnelson@georgia.org
- Statewide Logistics Project Director: Annie Baxter - abaxter@georgia.org
- International Trade Assistance: [Nikki Yu](mailto:nyu@georgia.org) - nyu@georgia.org

This County Logistics Spotlight was compiled by the Georgia Center of Innovation for Logistics



Logistics

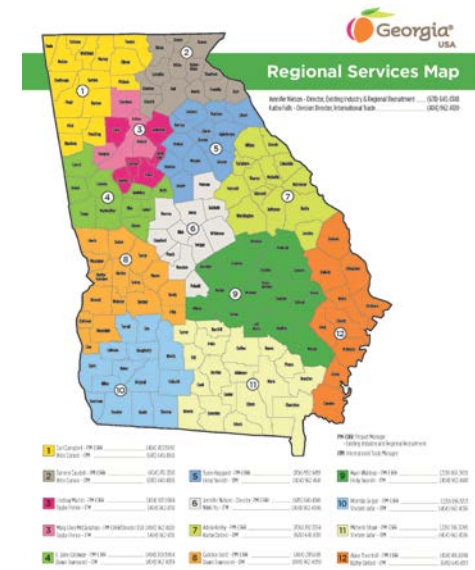
As an industry focused division of the Georgia Department of Economic Development The Center is the **leading statewide resource for fueling logistics industry growth and global competitiveness**. The Center provides the technical industry expertise, collaborative research, and partnerships needed to help the industry **connect, compete, and grow globally**. The Center provides a wide range of services and expertise to companies and communities across Georgia *at no cost*.

To learn more, or for details on how we can help:

visit on the web: www.georgialogistics.com

email us: eschrenk@georgia.org

call us: 912.966.7842



[CLICK IMAGE FOR FOR FULL-SIZE .PDF]